



Installation and User Guide

AppSPACE Configuration Editor



Original Instructions: ENGLISH

Document Number: MOD-21-2488

Issue: 1.0

Copyright

© Sepura Limited 2002– 2021 All rights reserved.

No part of the information contained herein and the other referred documents may be copied, distributed or transmitted by any means to any other party without prior written permission of Sepura Limited. The distribution of this document may require a Non-Disclosure Agreement (NDA) between Sepura Limited and their agents or customers. This document, the referred documents and the described product are considered protected by copyright according to the applicable laws.

Disclaimer

Although every reasonable effort has been made to ensure the accuracy of the information contained herein and any other referred document, this should not be construed as a commitment on the part of Sepura Limited and the liability of Sepura Limited for any errors and omissions shall be limited to the correction of such errors and omissions. Sepura Limited welcomes any comment and feedback as a way to improve any delivered documentation. The information contained herein has been prepared for the use of appropriately trained personnel, and it is intended for the purpose of the agreement under which the information is submitted. Any party using or relying upon this information assumes full responsibility for such use and in no event shall Sepura Limited be liable to anyone for especial, collateral, incidental, or consequential damages in connection with or arising out of the use of this information. The information or statements given in these documents regarding the suitability, capacity or performance of the mentioned hardware or software products cannot be considered binding but shall be defined in the agreement made between Sepura Limited and the customer.

Trademarks

The Sepura logo and some product branding logos and names are registered trademarks of Sepura Limited. All other trademarks appearing in this document are the property of their respective owners.

Contact Details

Sepura Limited
9000 Cambridge Research Park
Beach Drive, Waterbeach
Cambridge, CB25 9TL
United Kingdom
www.sepura.com

Contents

1.0 Introduction.....	1
1.1 PC Prerequisites	1
2.0 Installation.....	2
2.1 Running the Installer	2
2.2 Windows Service	3
2.3 Start Menu	3
3.0 Using the Configuration Editor	4
3.1 Home Page	4
3.2 Selecting an AppSPACE Application	4
3.3 Accessing the Configuration File	5
3.4 Editing Configurable Parameters	6
3.5 Advanced Editors	7
3.6 Custom Validation	7
3.7 Exporting a Configuration File	8
3.8 Importing Configuration Files.....	9

1.0 Introduction

Many AppSPACE Radio Applications include a Configuration File that can be edited or re-configured by Radio Fleet Administrators to adjust the behaviour of the app according to their own working environment and practices. The Administrator guide provided with your AppSPACE app will state if configuration is possible.

The AppSPACE Configuration Editor is a simple, PC based tool that allows you to select the configuration file and make & save the necessary changes quickly and without errors. This document explains how you can install the editor on your PC and start using it to edit and save your own bespoke App configurations.

1.1 PC Prerequisites

PC / Server

Please ensure that the PC prepared for installation meets the following minimum requirements:

- Operating system:
 - > Windows server 2016 or later
 - > Windows 10 Pro
- 8GB RAM
- 200MB free hard drive space (preferably SSD disk or RAID)

Browser

We recommend using Google Chrome or Microsoft Edge or any other mainstream modern browser.

2.0 Installation

2.1 Running the Installer

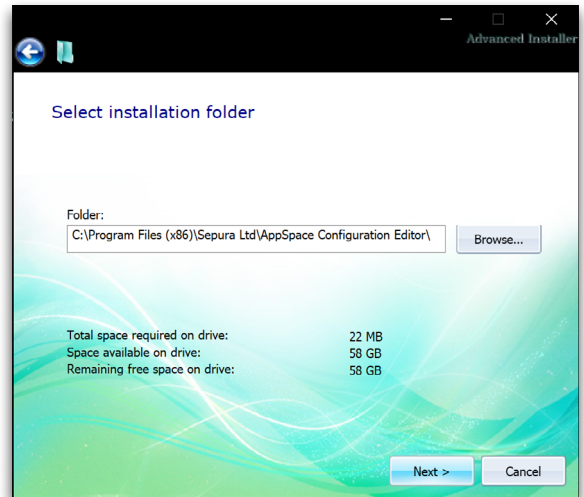
When the AppSPACE Configuration Editor Installer is launched, you will be prompted to authorise the installer package to make changes to the system. You must approve the request so the installer can construct the AppSPACE configuration web server and register the Windows service.

Follow the on screen instructions in the Installer:

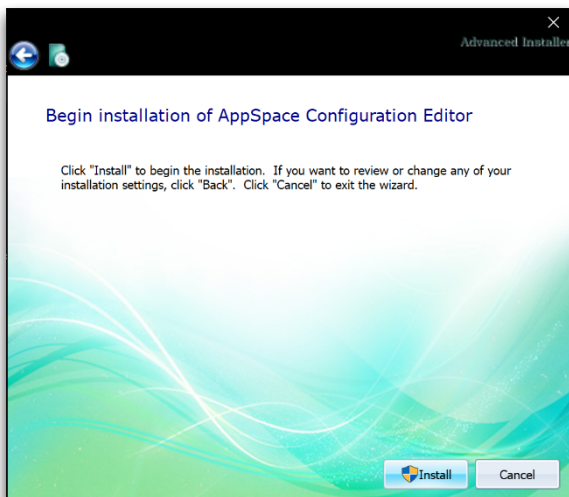
1. Installer welcome screen.



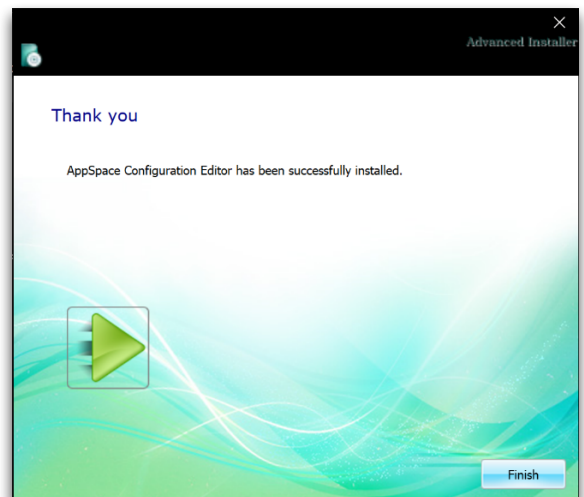
2. Select installation location.



3. Installation confirmation screen.

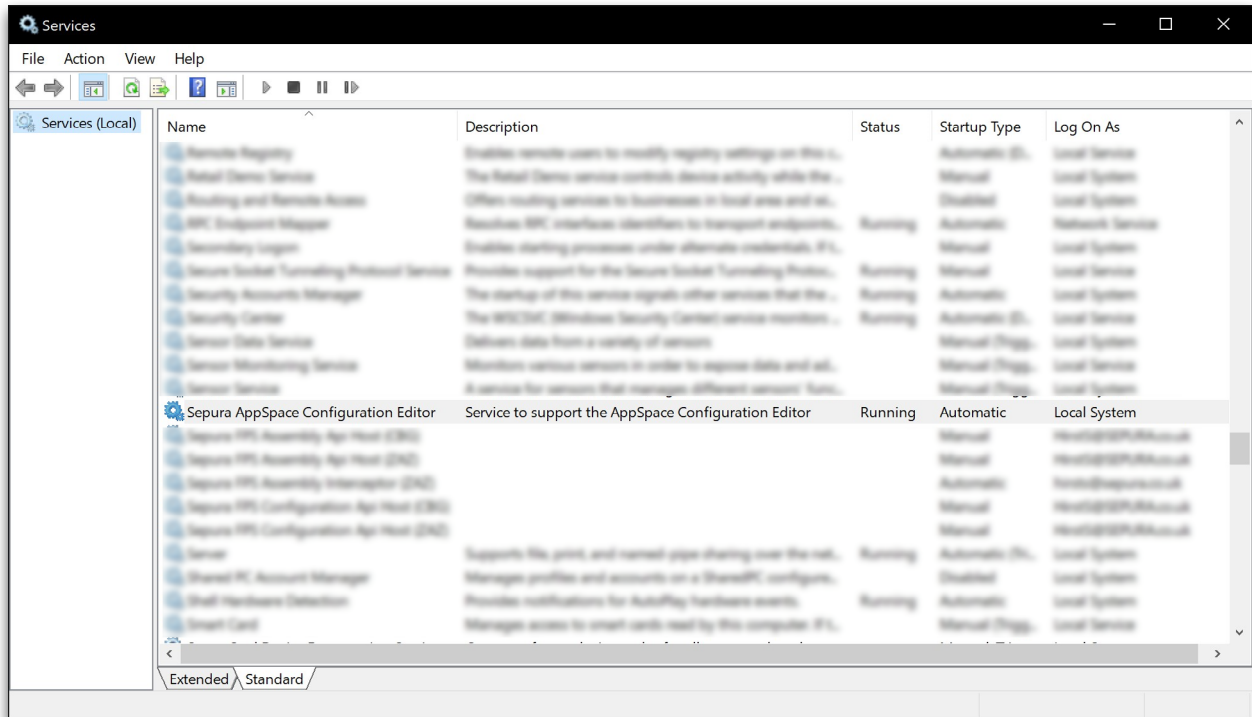


4. Installation complete, with the option to launch the application.



2.2 Windows Service

The AppSPACE configuration editor installer will add a new Windows service, called 'Sepura AppSPACE Configuration Editor'. The new service will automatically start with your PC and will keep running until your PC, or the service, is stopped.



2.3 Start Menu

The Application Installer adds a new item to your Window's start menu:

Start > AppSPACE Configuration Editor > AppSPACE Configuration Editor.

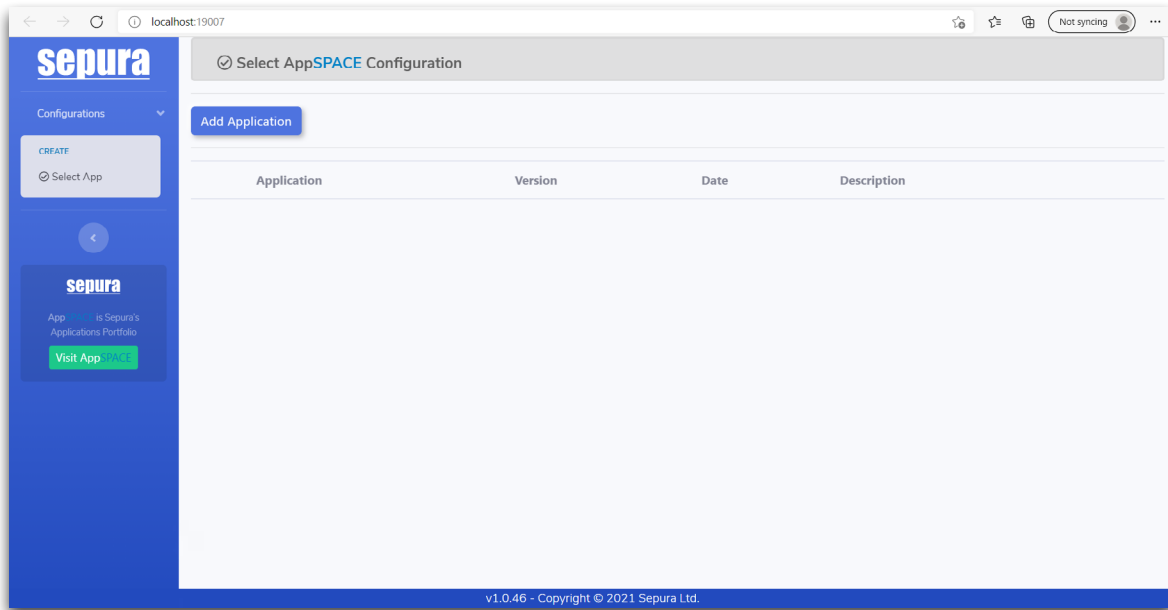
Clicking this menu item launches the default web-browser and navigates to the AppSPACE Configuration Editor homepage at <http://localhost:19007>.

3.0 Using the Configuration Editor

3.1 Home Page

The application home page is the default page whenever you visit the <http://localhost:19007/> URL, and provides access to the navigation controls on the left of the screen.

The only menu option available by default is **Select App**.



3.2 Selecting an AppSPACE Application

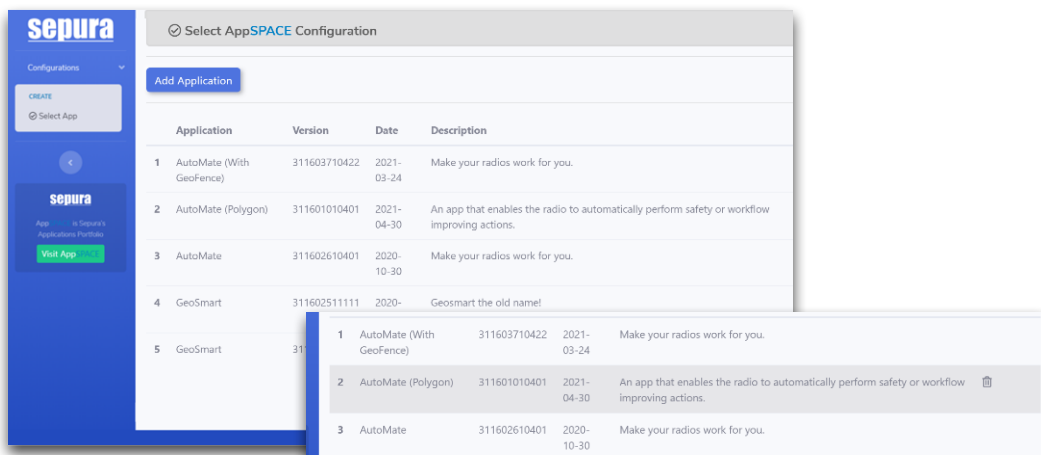
On the Home page you will see an empty Applications screen. You must import the Application Definition file for at least one AppSPACE Application (ie one whose configuration file you want to edit) before you can continue.



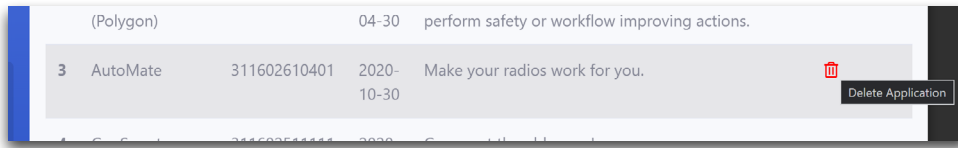
Note: When you received the AppSPACE Application and related files, they will have been delivered in a package / zip folder. The file in **.AppDef** format, must be copied to the PC for selection by the Configuration Editor Tool.

Use the **Add Application** button to import the Application definition file for the Application you want to configure.

After importing, the relevant application will be listed in the home screen. Choose the application by selecting it.



Remove applications from the editor by hovering over the entry and clicking the **Delete Application** red bin icon.



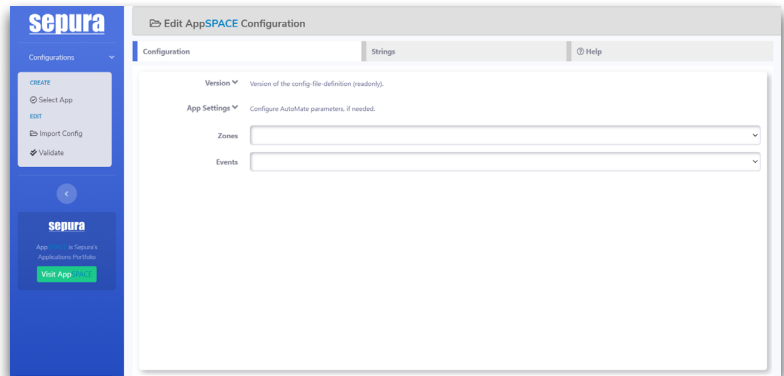
3.3 Accessing the Configuration File

After selecting an AppSPACE application the screen displays one or more types of default (unedited) configurations that can be edited for the chosen AppSPACE App. Each configuration type is shown on a separate tabbed page.

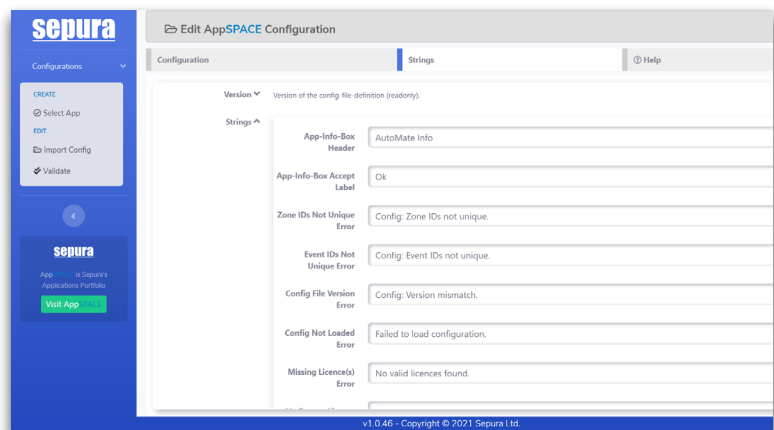
The application used in this example has two types of configuration, under tabs named:

- **Configuration**
- **Strings**

The third tab contains any application specific help. Some applications do not contain any App specific help, so the tab will not be available.



Open each type of configuration tab to see which parameters can be edited. Refer to the Help tab (or the AppSPACE application user manual) for further information about each configurable parameter if required.



Alternatively a previously edited configuration file can be imported and re-edited (see section "3.8 Importing Configuration Files" on page 9).

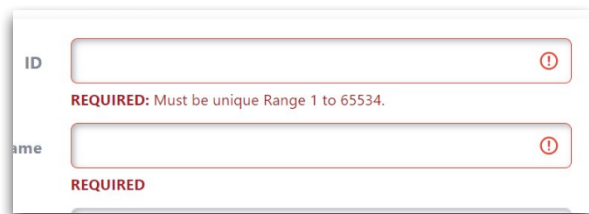
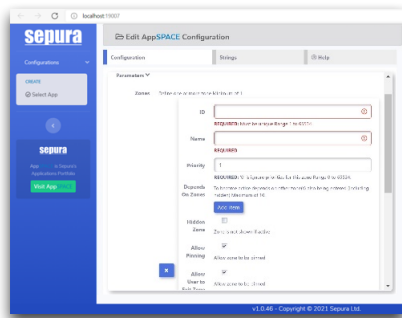
3.4 Editing Configurable Parameters

Each application contains multiple application specific parameters. Some parameters might be mandatory, others optional, and they range in datatype from:

- Numeric (int & double)
- String (text)
- Boolean (true/false)

Some applications also contain combo-boxes of enumerated values, or other complex types.

The editor uses in-field validation warnings when you exclude a mandatory field, or you enter/select an incorrect value.

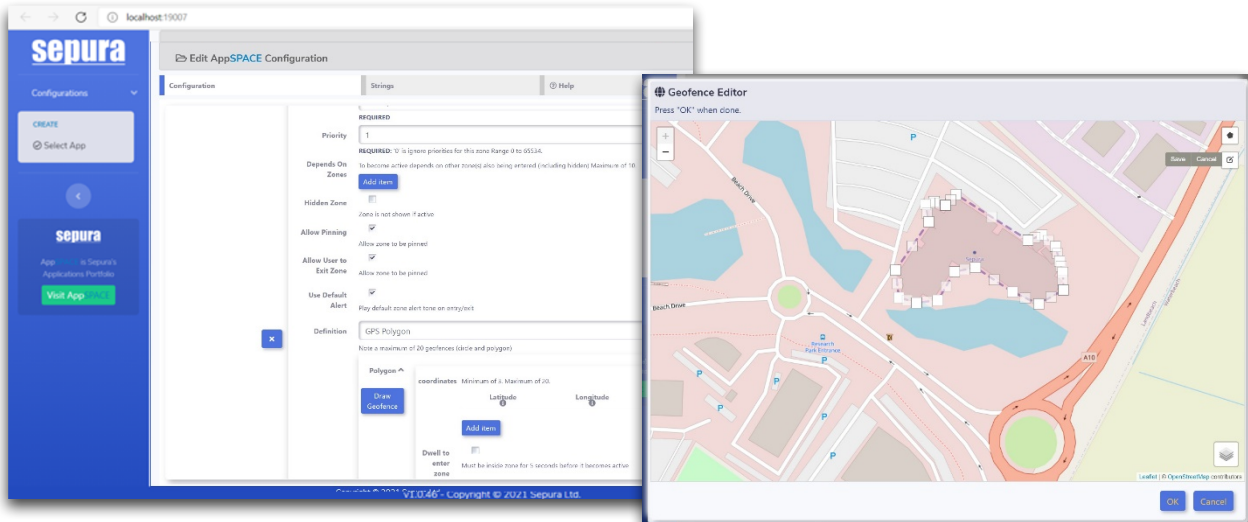


Refer to the Help tab (or the AppSPACE application user manual) for further information about each configurable parameter if required.

Field Type	Field Name	Available for Zone?	Available for Event?	Description	Range Value	Default Value	Importance
Application General Configuration							
Application Parameter	zoneTextLine	N/A	N/A	This specifies the line of the Top-Level Screen used for zone information feedback. For the application to use this line for user feedback, the matching line needs to be defined within the radio as Dynamic Text. This is achieved by defining radio parameter [3704] using Sepura Radio Manager. Note: The line numbering displayed on Radio Manager for [3704] is different from the numbering used in [zone Text Line] and [userTextLine]. Line number n in Radio manager correspond to n-1 in [zone Text Line] and [userTextLine].	0-5	4	Optional
Application Parameter	userTextLine	N/A	N/A	This specifies the line of the Top-Level Screen used for user feedback. For the application to use this line for user feedback, the matching line on [3704] needs to be defined as Dynamic Text. Note: The line numbering displayed on Radio Manager for [3704] is different from the numbering used in [zone Text Line] and [userTextLine]. Line number n in Radio manager correspond to n-1 in [zone Text Line] and [userTextLine].	0-5	5	Optional
Application Parameter	Startup Delay (seconds)	N/A	N/A	This specifies the delay in seconds on radio startup before the application starts. Users might want to add a delay to ensure specific radio action specific to their customisation are performed before automation starts.	0-300	0	Optional
Application Parameter	Disable hold function in the app's UI	N/A	N/A	This specifies if the user can use the hold function when one or multiple zones are active. When set to false, the option to hold disappears from the menu and the hold softkey has no effect when pressed.	true - false	FALSE	Optional
Application Parameter	Allow Events in Held State	N/A	N/A	This specifies if events can occur while zones are on hold. When set to false, the application discards any events whereas events are serviced normally when this parameter is set to true.	true - false	FALSE	Optional
Application Parameter	Pause/hold automation	N/A	N/A	Automation are suspended while pressing the PTT and while in an emergency call	0-N/A	0	Optional

3.5 Advanced Editors

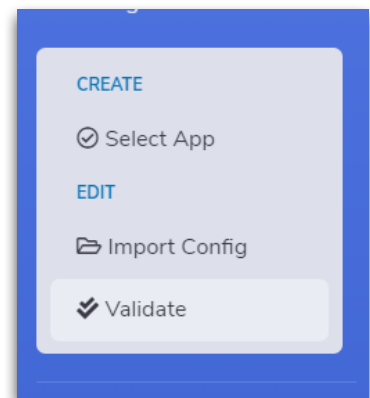
Some applications support advanced editors. These editors open in a separate window and can be used for complicated data sets. One example is the GeoFence editor to allow you to specify longitude/latitude coordinates using a map.



Note: In some circumstances (related to the browser version and set up) the map may not appear when the **draw geofence** button is first pressed. To resolve this, type some numbers into the co-ordinates field (within the accepted numerical range of each field) and press the button again. The map should display and you can then use the tool as normal to delete or re-draw the geofence in your chosen location.

3.6 Custom Validation

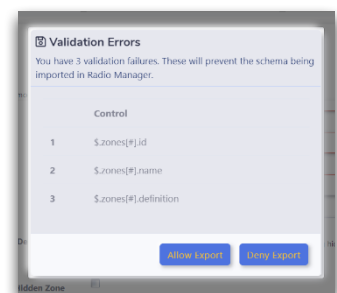
The completed configuration must be validated using the Validate menu before you can export a an edited configuration file.



When the validation is initiated, any errors are listed. You have the option to **Allow Export**, when the **Export Config** menu is displayed, or you can choose the **Deny Export** to return and fix the validation problems.



Note: Allowing export of a configuration file with errors may be useful if you want to save your work and come back to finish editing it later. A configuration file with errors **should not** be installed with the AppSPACE App into a radio.

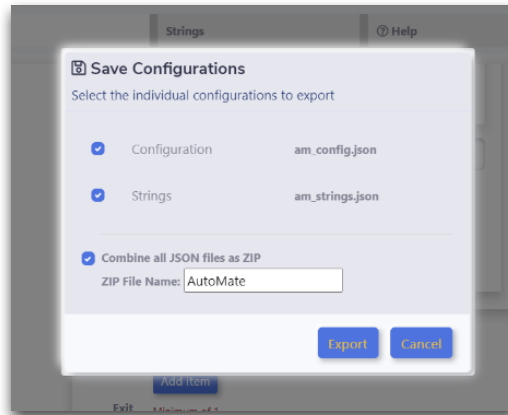
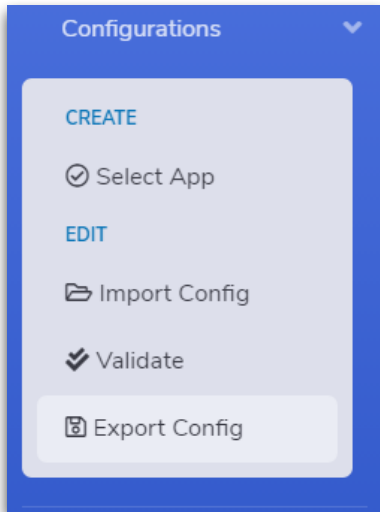


If there are no validation errors, the **Export Config** menu will be displayed without the validation failure dialog being shown.

3.7 Exporting a Configuration File

After validation, the **Export Config** menu option is visible and can be used to export the AppSPACE configuration file using one of two formats:

- ZIP
- JSON

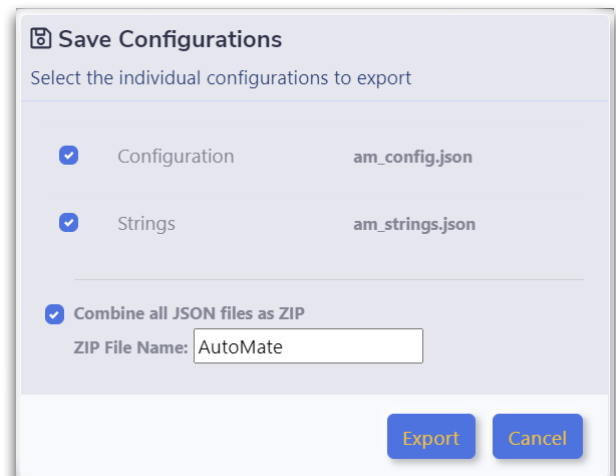


It is recommended that the ZIP format is used in most circumstances. The JSON method is aimed at advanced users who may need to create a library of configuration files that can be mixed and matched (such as Strings A and Configuration B), before being directly imported via radio manager, or combined in a ZIP file first.

3.7.1 Export Configuration – ZIP File

The ZIP format is used by Radio Manager to program the radios. When the configuration data is completed, you can export one or more of the configuration types (tabs) in a single ZIP file.

There is no restriction on the name of the ZIP file, so you can change the name of the ZIP file when you export – the name isn't used by Radio Manager.



3.7.2 Export Configuration – JSON File(s)

Exporting in JSON format allows you to export individual configurations into their own JSON files. This mechanism allows you to save your work, keep JSON templates or import a single JSON file into Radio Manager.



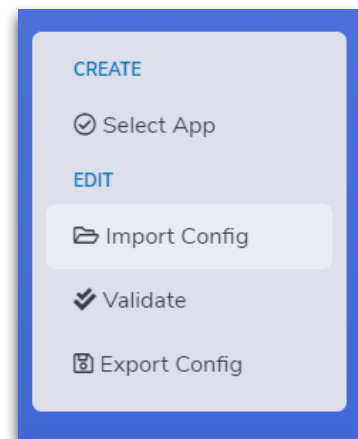
Note: For convenience, JSON files can be renamed, but the default name must be used if you intend to import the JSON file into Radio Manager.



3.8 Importing Configuration Files

Both ZIP and JSON configuration files can be imported back into the AppSpace editor using the **Import Config** menu link.

If you import a ZIP file, the editor will update all the configuration pages. If you import a single JSON file, the editor will only update the currently selected tab page, if it contains the correct configuration schema.





Sepura Limited

9000 Cambridge Research Park
Beach Drive, Waterbeach
CAMBRIDGE
CB25 9TL. UK.

T: +44 (0)1223 876000

www.sepura.com

MOD-21-2488 Issue 1